

# For Muslims HAMAP

Created by Kanazawa Halal-food Map Students

## What is HAMAP?

HAMAP is a map of Kanazawa created by students of the Faculty of Humanities, Kanazawa Seiryō University, and designed for use by Muslim tourists visiting the city. We hope it might be helpful during your stay here.



[Questionnaire]

## About Pictograms



Pork-free dishes available



Alcohol-free dishes available



Has tableware and kitchen utensils acceptable for halal cooking.



English menu or English-speaking staff available.

Contact this number if you have any questions about food.

Ishikawa Muslim Association Matsui  
TEL 090-7086-3480

This map was created with support from the University Consortium Ishikawa and the Ishikawa Prefectural Government.

## Recommended Sightseeing Spots

Kanazawa is a historic castle town that features fascinating traditional culture and architecture, as well as a wide range of fresh, tasty cuisine.

Photo credit : Kanazawa City



Higashi Chaya District



Ōmi-chō Market



Kanazawa Castle Park



Kenroku-en Garden



**Kanazawa Station**  
The "Tsuzumi-Mon Gate" and "Motenashi Dome" at Kanazawa Station are both popular photo spots.

**Higashi Chaya (Eastern Teahouse) District**  
Its beautifully preserved, elegantly atmospheric streets are lined with shops offering Japanese green tea, sweets, and a range of traditional craft products.

**Kenrokuen Garden**  
Famed as one of the "three most beautiful landscape gardens" in Japan, it offers stunningly superb views in each of the four seasons of the year.



Kanazawa Station



Nagamachi Former Samurai-residences



Oyama Jinja Shrine



The 21st Century Museum of Contemporary Art



The Ishikawa Prefectural Museum of History

## HAMAP KANAZAWA SHOP DATA

### About Pictograms

- 📍 Address
- ☎ Telephone number
- 🕒 Business hours
- 🗓 Days of week when normally closed
- ¥ Approximate cost per person
- 💳 Possible payment methods

### Please Note

- Please speak to staff should you need a place to pray at sightseeing spots.
- Please wipe down excess water after using the washroom sink.

**1** Cafe featuring local cuisine.



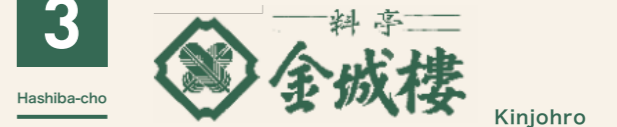
- 📍 1-1, Kinoshinbomachi, Kanazawa City.  
On the first floor of Kanazawa Hyakubangai Anto in the Kanazawa Station complex.
- ☎ 076-235-2322 Reservations not accepted.
- 🕒 9:00-19:00 (Last order 18:45)
- 🗓 Open every day.
- ¥ Lunch~¥999 Dinner¥1,000 to ¥1,999
- 💳 Credit cards accepted.  
Some pre-charged IC cards accepted.

**2** Tavern offering a wide range of seafood.



- 📍 2-5-9, Honmachi, Kanazawa City.  
5-minute walk from the East Exit of Kanazawa Station.
- ☎ 076-260-1181 Reservations accepted.
- 🕒 17:30-24:00 (Last order 23:00)
- 🗓 Closed Sundays and sometimes on other days.
- ¥ ¥5,000 to ¥7,999
- 💳 Credit cards accepted.

**3** Traditional Japanese multi-course dinners.



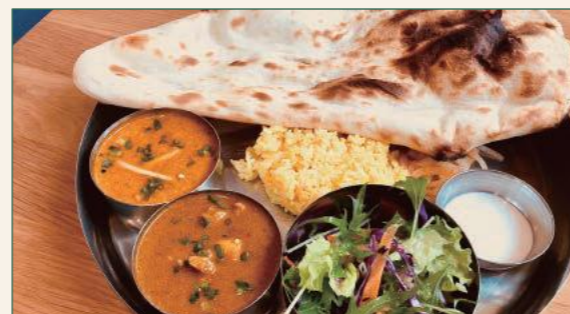
- 📍 2-23, Hashiba-cho, Kanazawa City.  
5-minute walk from "Hashiba-chō" bus stop.
- ☎ 076-221-8188 Reservations accepted.
- 🕒 11:00-21:00
- 🗓 Open every day.
- ¥ Lunch ¥7,500~ Dinner ¥10,000~  
Tax, service fee and cover charge are excluded in the price
- 💳 Credit cards accepted.

**4** Dining bar.  
**slow luck**  
vegetable bar



- 📍 13-23, Oyama-chō, Kanazawa City.  
5-minute walk from "Minami-chō / Oyama Jinja Shrine" bus stop.
- ☎ 076-254-1511 Reservations accepted.
- 🕒 18:00 - 24:00 (Last order 23:00)
- 🗓 Closed irregularly.
- ¥ ¥2,000 to ¥2,999
- 💳 Credit card accepted.

**5** Indian and Nepali cuisine.



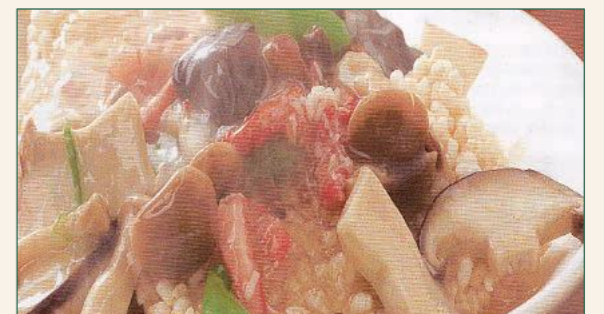
- 📍 1-4-59, Nagamachi, Kanazawa City.  
5-minute walk from "Kōrimbō" bus stop.
- ☎ 076-262-2170 Reservations accepted.
- 🕒 Lunch 11:30-15:00 (Last order 14:30)  
Dinner 18:00-22:00 (Last order 21:30)
- 🗓 Closed Mondays.  
(in case of Monday's being a holiday, closed the following Tuesday)
- ¥ Lunch ¥1,000 to ¥1,999/Dinner ¥2,000 to ¥2,999
- 💳 Cash only.

**6** Traditional Kaga cuisine (Japanese cuisine).



- 📍 4-7, Kakinokibatake, Kanazawa City.
- ☎ 076-221-8491 Reservations required (3 days prior to visit).
- 🕒 Lunch 11:30-13:30  
Dinner 17:00-22:00 (Monday to Thursday) (Last order 21:00)  
17:00-23:00 (Friday and Saturday) (Last order 22:00)
- 🗓 Closed Sundays.
- ¥ ¥5,000 to ¥5,999
- 💳 Credit cards accepted.

**7** Chinese cuisine.  
**全開口笑**  
Zenkaikōshō



- 📍 5-7, Kakinokibatake, Kanazawa City.  
5-minute walk from either "Katamachi" or "Kōrimbō" bus stops.  
3-minute walk from the 21st Century Museum of Contemporary Art.
- ☎ 076-222-4262 Reservations accepted.
- 🕒 Lunch 11:30-14:00/Dinner 18:00-22:00 (Last order 21:30)
- 🗓 Closed Mondays.
- ¥ Lunch ¥1,000 to ¥1,999/Dinner ¥4,000 to ¥4,999
- 💳 Cash only.